



# NEOTECH

Experience the Future Today

# MISSION and VISION



## Mission:

To enhance mobility and improve people's lives by offering safe, efficient, and technologically advanced elevator solutions. We aim to create sustainable and eco-friendly vertical transportation systems that contribute to a greener future.

## Vission:

As a leading player in the elevator industry, we envision becoming a global leader in innovative elevator technology. We aim to be the go-to choice for customers seeking state-of-the-art elevators, escalators, and other vertical transportation systems that blend seamlessly with modern architectural designs.

## ABOUT

At NeoTech Elevators, we are committed to providing cutting-edge elevator solutions that elevate your experience to new heights. Our organization is dedicated to revolutionizing the vertical transportation industry through innovation, reliability, and exceptional service. With a team of skilled professionals and a passion for excellence, we strive to exceed our customers' expectations in every project we undertake.

We embrace technological advancements and continually push the boundaries of what's possible in elevator design and functionality. Our commitment to innovation drives us to develop smart, energy-efficient, and user-friendly elevator systems.

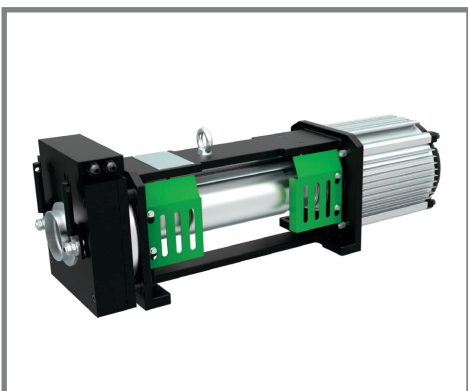
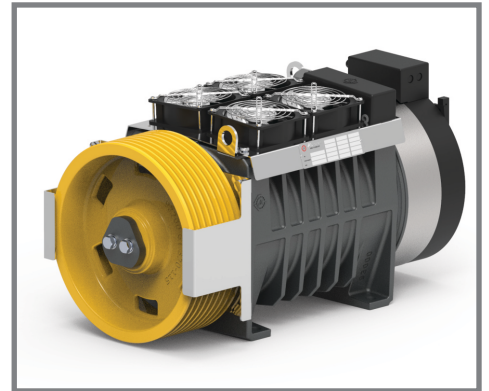




## Synchronous Gearless Machine

We use permanent magnet gearless machine with energy saving compact structure to achieve superior performance. This means our elevator can save energy required by up to 50%.

High efficiency: permanent magnet synchronous motor allows the direct generation of torque by eliminating the need of mechanical reduction.



## Grooved Belt Machine

Belt drive technology in elevators replaces traditional steel ropes with Grooved, polyurethane-coated belts (STM), offering numerous advantages. This innovation allows for lighter, more flexible systems that significantly reduce energy consumption and friction. The belts' reduced weight and compact design enable smaller motors and machine-room-less configurations, optimizing building space. They provide a smoother, quieter ride by minimizing vibration and noise, enhancing passenger comfort. Maintenance requirements are lower due to the belts' durability, while their advanced monitoring capabilities ensure high safety standards.

## SOFT START - STOP VALVE

Advanced 2CH system is an innovation specially designed for absolute comfort during the start and stop of an elevator.



## EMERGENCY LOWERING VALVE

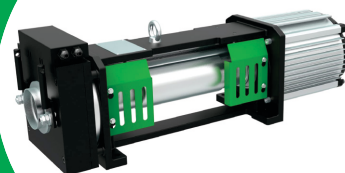
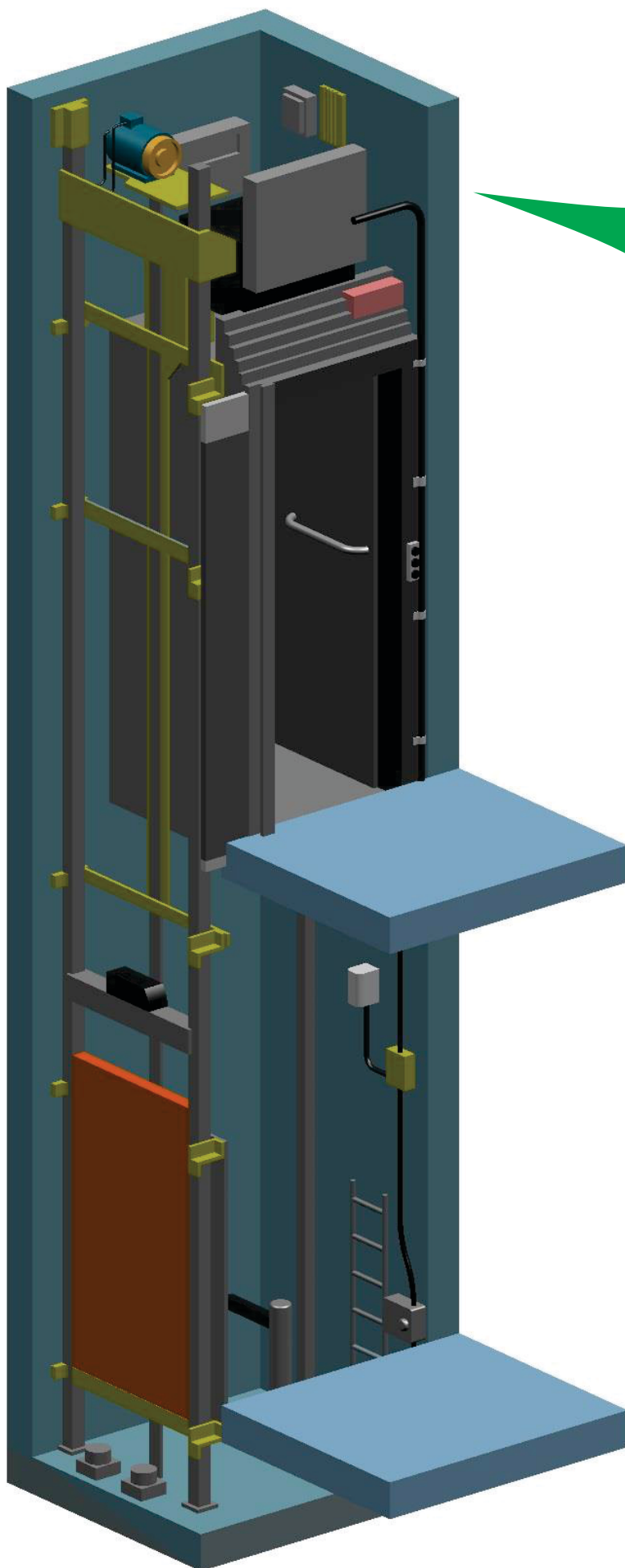
Simple and efficient rescue system, based on gravitational force.



## SAFETY RUPTURE VALVE

In the event of failure in the main cylinder line or when the down speed exceeds allowable limits; the valve closes, bringing the car to a smooth stop.

# ECOGLIDE (BELT DRIVE)



## 01 **INTELLIGENT DESIGN**

New generation disc brake technology ensures good ride quality and intelligent landing with smooth ride

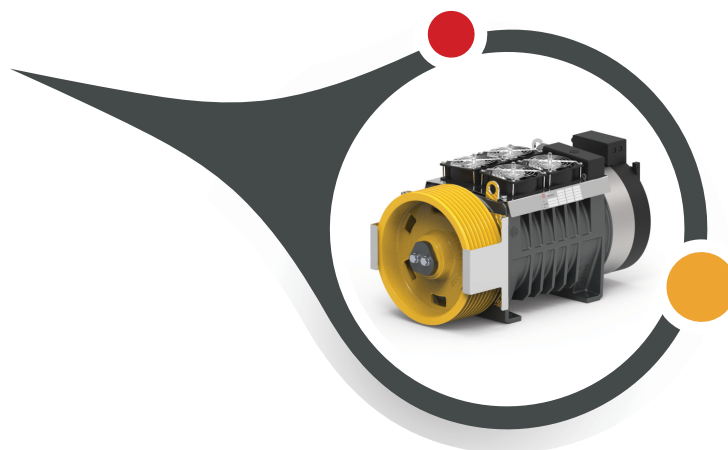
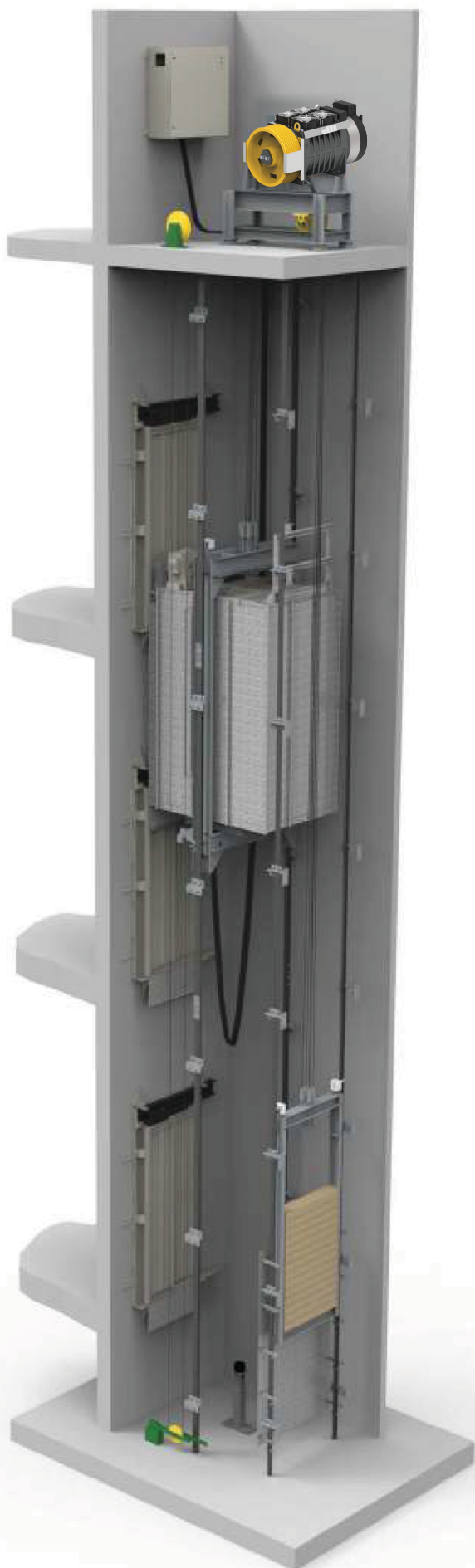
## 02 **SPACE-SAVING**

This design eliminates the need of machine room and provides room for creativity in limited spaces for modern architecture

## 03 **BELT DRIVE**

Belt drive technology in elevators replaces traditional steel ropes with Grooved, polyurethane-coated belts (STM)





## NOISE AND VIBRATION CONTROL

Streamlined car structure, sealed car enclosure, re-inforced multiple connections and wrapped-on moving parts. These prevent noise and vibration leading to a peaceful environment.



## PRECISE AND OPTIMAL CONTROL

The digital closed-loop variable frequency (VF) drive, with vector control, further increases efficiency and accuracy. A digital speed encoder ensures correct car speed and positioning.



## MAGNETIC DRIVE

This means no tooth-wear, no need to change the oil on a regular basis, long service life, and without maintenance



Center Opening  
Stainless Steel Door



Center Opening  
Glass Door



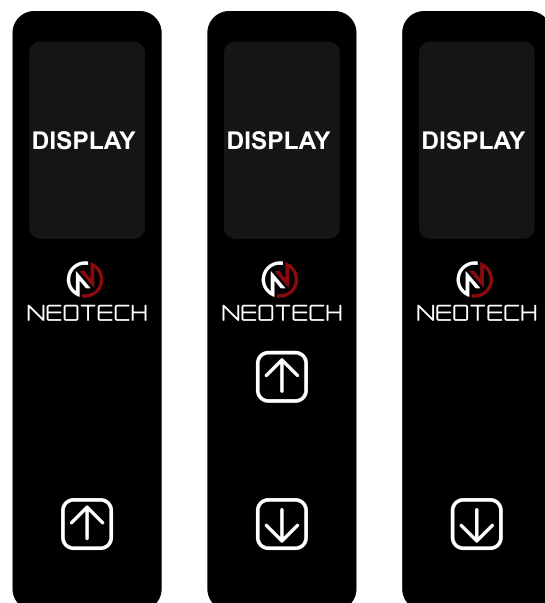
Telescopic Opening  
Stainless Steel Door

## PANELS

### COP



### LOP



### TOUCH PANEL

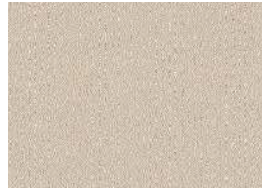
# MS SERIES



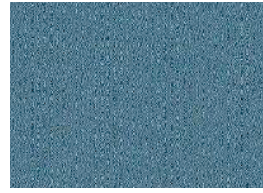
RAL9010 (standard)



RAL9003



RAL1013



RAL5024



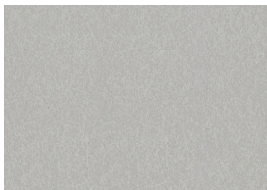
RAL1015



RAL7035



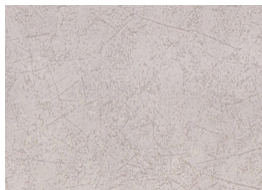
RAL7037



RAL 7035



RAL 9003

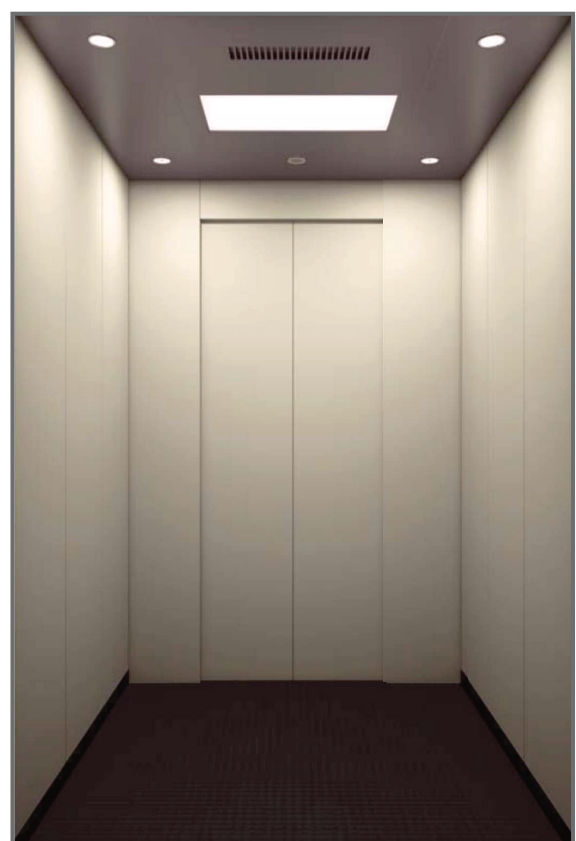


RAL 1013

MS Painted & Rear Mirror Finish



MS Painted & Rear Mirror Finish

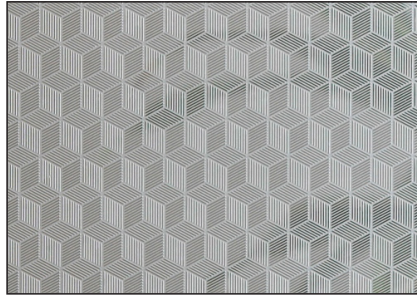




# ELEGANCE SERIES



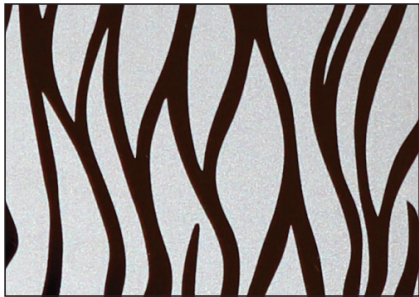
**MSPL 313**



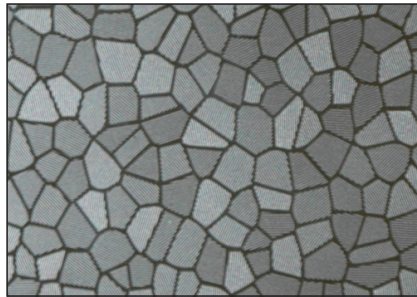
**MSPL 247**



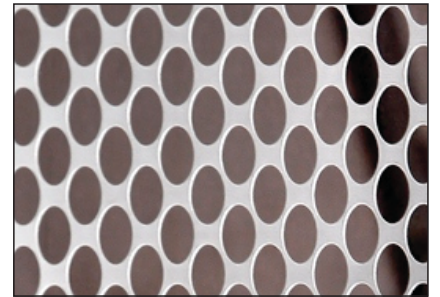
**MSPL 068**



**MSPL 215**



**MSPL 217**



**MSPL 223**

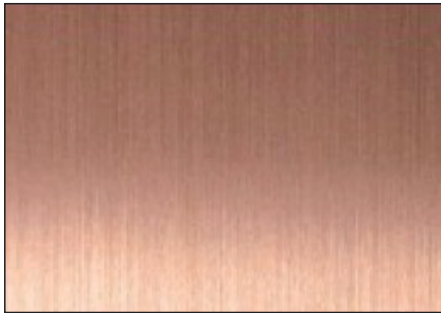
**SS Hairline with L/R Design**



**SS Hairline with F/B Design**



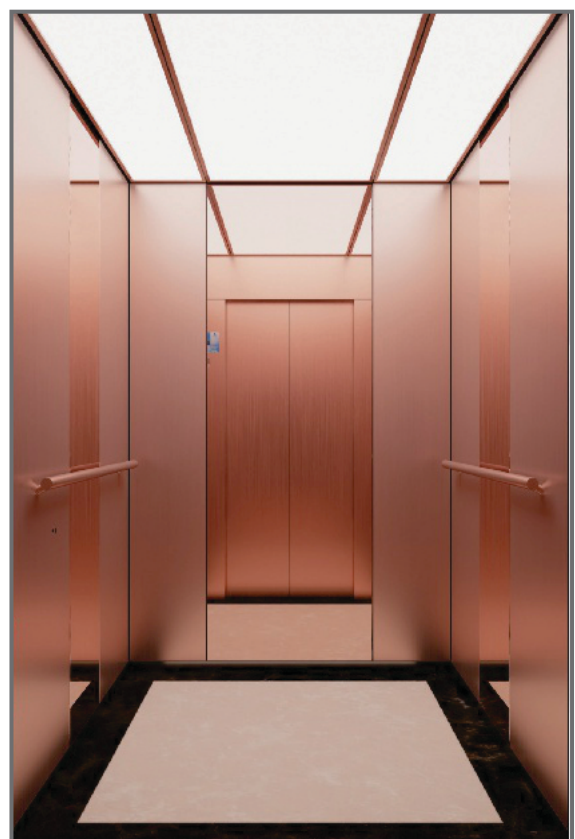




SS Gold Hairline & Gold Mirror



SS Rose Gold Hairline & Mirror







SS Hairline with Three Side Glass



SS Hairline with four Side Glass







# NEOTECH

Experience the Future Today

 [info@neotechelevators.com](mailto:info@neotechelevators.com)

 +91 888 546 4412

 Himayatnagar, Hyderabad,  
Telangana 500029.